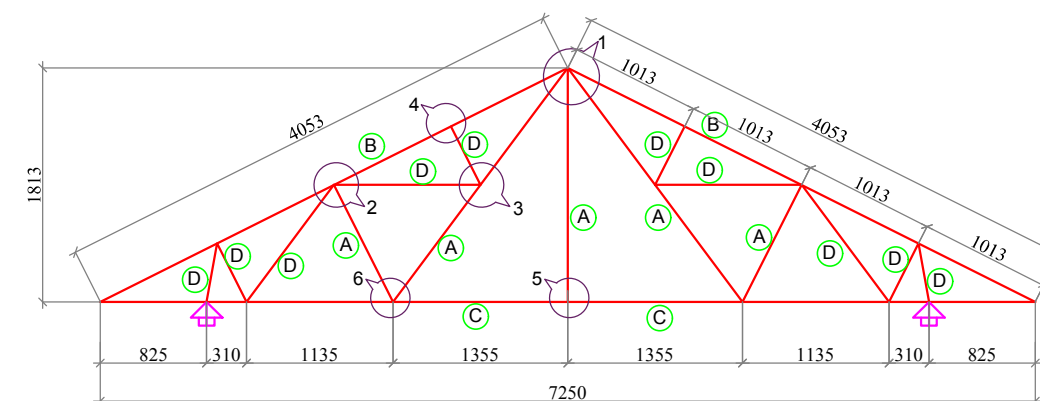
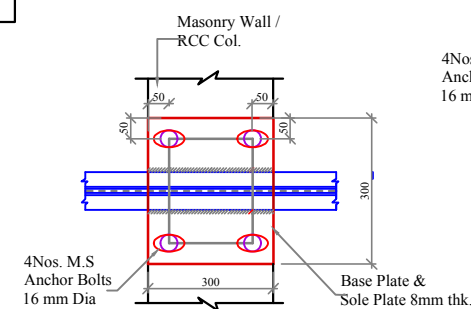
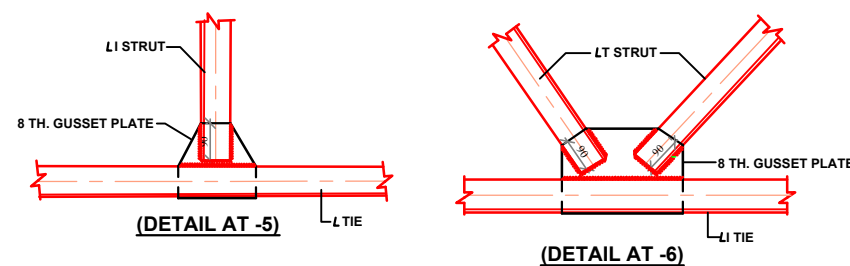
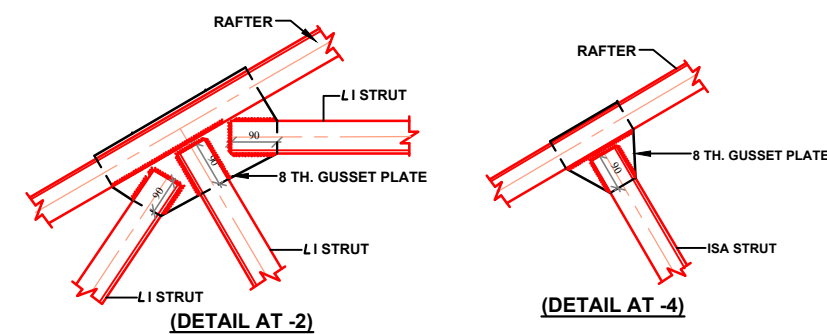
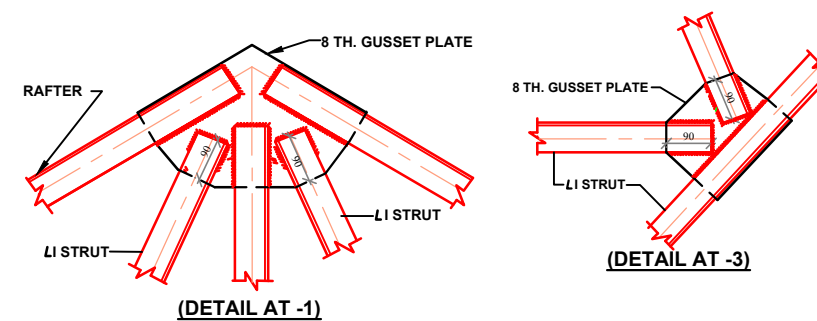




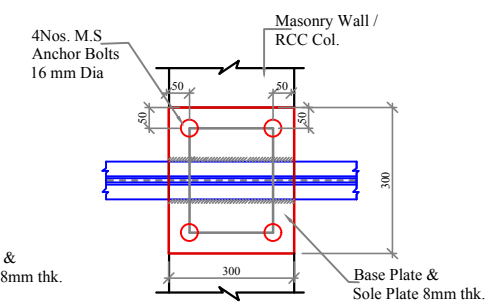
PURLIN-ISA 65x65x6@650c/c



TRUSS T1

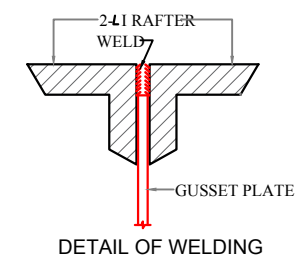







### DETAILS OF M.S. BASE PLATES AT SLIDING END



### DETAILS OF M.S. BASE PLATES


#### FIXED END



L E G E N D		
(A)	2ISA - 50 * 50 * 6	
(B)	2ISA - 50 * 50 * 6 -RAFTER	
(C)	2ISA - 50 * 50 * 6 - TIE	
(D)	2ISA - 45 * 45 * 6	
P U R L I N - I S A - 6 5 x 6 5 x 6 @ 6 5 0 c / c 		

NOTES:-

1. ALL DIMENSIONS ARE IN mm. UNLESS OTHERWISE SPECIFIED.
2. DO NOT SCALE WORK, TO WRITTEN DIMENSIONS ONLY.
3. DRAWING SIZE : A3

5. DRAWING SIZE : A3		
DEPTT	PMU JTRP	
PROJECT		
TITLE		
TRUSS DETAILS		WAPCOS LIMITED
DWG. NO. - WAPCOS/C/PCB/STR/06	DATE - 14.06.2019	REVISION : - R3